

求積表

地番 A 1-1583-1					
NO	Xn	Yn	Yn+1-Yn-1	Xn · (Yn+1-Yn-1)	
357	140959.942	46579.427	7.553	1064670.441926	
1020	140958.851	46584.249	12.991	1831196.433341	
7069	140956.965	46592.418	4.938	696045.493170	
7042	140942.979	46589.187	-15.722	-2215905.515838	
7068	140946.722	46576.696	-9.760	-1375640.006720	
			合計	366.845879	
			合計面積	183.4229395	
			地積	183.42	

地番 B 2-1583-8					
NO	Xn	Yn	Yn+1-Yn-1	Xn · (Yn+1-Yn-1)	
7069	140956.965	46592.418	5.205	733681.002825	
1019	140956.509	46594.392	11.766	1658494.284894	
1018	140954.372	46604.184	10.274	1448165.217928	
7070	140954.276	46604.666	-2.589	-364930.620564	
7041	140939.259	46601.595	-15.479	-2181598.790061	
7042	140942.979	46589.187	-9.177	-1293433.718283	
			合計	377.376739	
			合計面積	188.6883695	
			地積	188.68	

地番 C 3-1583-10					
NO	Xn	Yn	Yn+1-Yn-1	Xn · (Yn+1-Yn-1)	
7070	140954.276	46604.666	15.810	2228487.103560	
1017	140951.736	46617.405	15.256	2150359.684416	
R1	140951.356	46619.922	-0.875	-123332.438500	
R2	140934.784	46616.530	-16.386	-2309357.370624	
7040	140938.680	46603.536	-14.935	-2104919.185800	
7041	140939.259	46601.595	1.130	159261.362670	
			合計	499.157722	
			合計面積	249.5788610	
			地積	249.57	

地番 F 5-1583-13					
NO	Xn	Yn	Yn+1-Yn-1	Xn · (Yn+1-Yn-1)	
7010	140934.003	46601.710	4.531	638571.967593	
7011	140933.880	46602.116	13.387	1886681.851560	
7077	140929.996	46615.097	8.452	1191140.326192	
R3	140914.871	46610.568	-17.175	-2420212.909425	
1026	140920.041	46597.922	-12.983	-1829564.892303	
7059	140920.165	46597.585	3.788	533805.585200	
			合計	421.928637	
			合計面積	210.9643185	
			地積	210.96	

地番 E 6-1583-12					
NO	Xn	Yn	Yn+1-Yn-1	Xn · (Yn+1-Yn-1)	
7009	140937.969	46588.450	17.162	2418777.423978	
7010	140934.003	46601.710	9.135	1287432.117405	
7059	140920.165	46597.585	-16.661	-2347870.869065	
1025	140924.789	46585.049	-13.037	-1837236.474193	
7060	140924.948	46584.548	3.401	479285.748148	
			合計	387.946273	
			合計面積	193.9731365	
			地積	193.97	

地番 F 7-1583-11					
NO	Xn	Yn	Yn+1-Yn-1	Xn · (Yn+1-Yn-1)	
7062	140941.792	46575.677	15.112	2129912.360704	
7009	140937.969	46588.450	8.871	1250260.722999	
7060	140924.948	46584.548	-12.054	-1698709.323192	
386	140927.535	46576.396	-10.437	-1470860.682795	
385	140928.222	46574.111	-1.878	-264663.200916	
8005	140930.231	46574.518	-0.773	-108939.088563	
8008	140930.471	46573.338	1.159	163338.415689	
			合計	339.224126	
			合計面積	169.6120630	
			地積	169.61	

地番 G その他3-1583-9					
NO	Xn	Yn	Yn+1-Yn-1	Xn · (Yn+1-Yn-1)	
7040	140938.680	46603.536	14.414	2031490.133520	
R2	140934.784	46616.530	11.561	1629347.037824	
7077	140929.996	46615.097	-14.414	-2031364.962344	
7011	140933.880	46602.116	-11.561	-1629336.586680	
			合計	135.622320	
			合計面積	67.8111600	
			地積	67.81	

地番 H 指導線道路1					
NO	Xn	Yn	Yn+1-Yn-1	Xn · (Yn+1-Yn-1)	
7065	140950.785	46570.168	2.448	345047.521680	
7047	140949.487	46570.953	1.566	220726.896642	
7046	140948.210	46571.734	4.010	565202.322100	
7066	140947.245	46574.963	4.962	699380.229690	
7068	140946.722	46576.696	14.224	2004826.173728	
7042	140942.979	46589.187	24.899	3509339.234121	
7041	140939.259	46601.595	14.349	2022337.427391	
7040	140938.680	46603.536	0.521	73429.052280	
7011	140933.880	46602.116	-1.826	-257345.264880	
7010	140934.003	46601.710	-13.666	-1926004.084998	
7009	140937.969	46588.450	-26.033	-3669038.146977	
7062	140941.792	46575.677	-14.504	-2044219.751168	
7063	140942.319	46573.946	-4.595	-647629.955805	
7006	140943.172	46571.082	-5.441	-766871.798852	
7064	140941.585	46568.505	-0.914	-128820.608690	
			合計	359.246262	
			合計面積	179.6231310	
			地積	179.62	

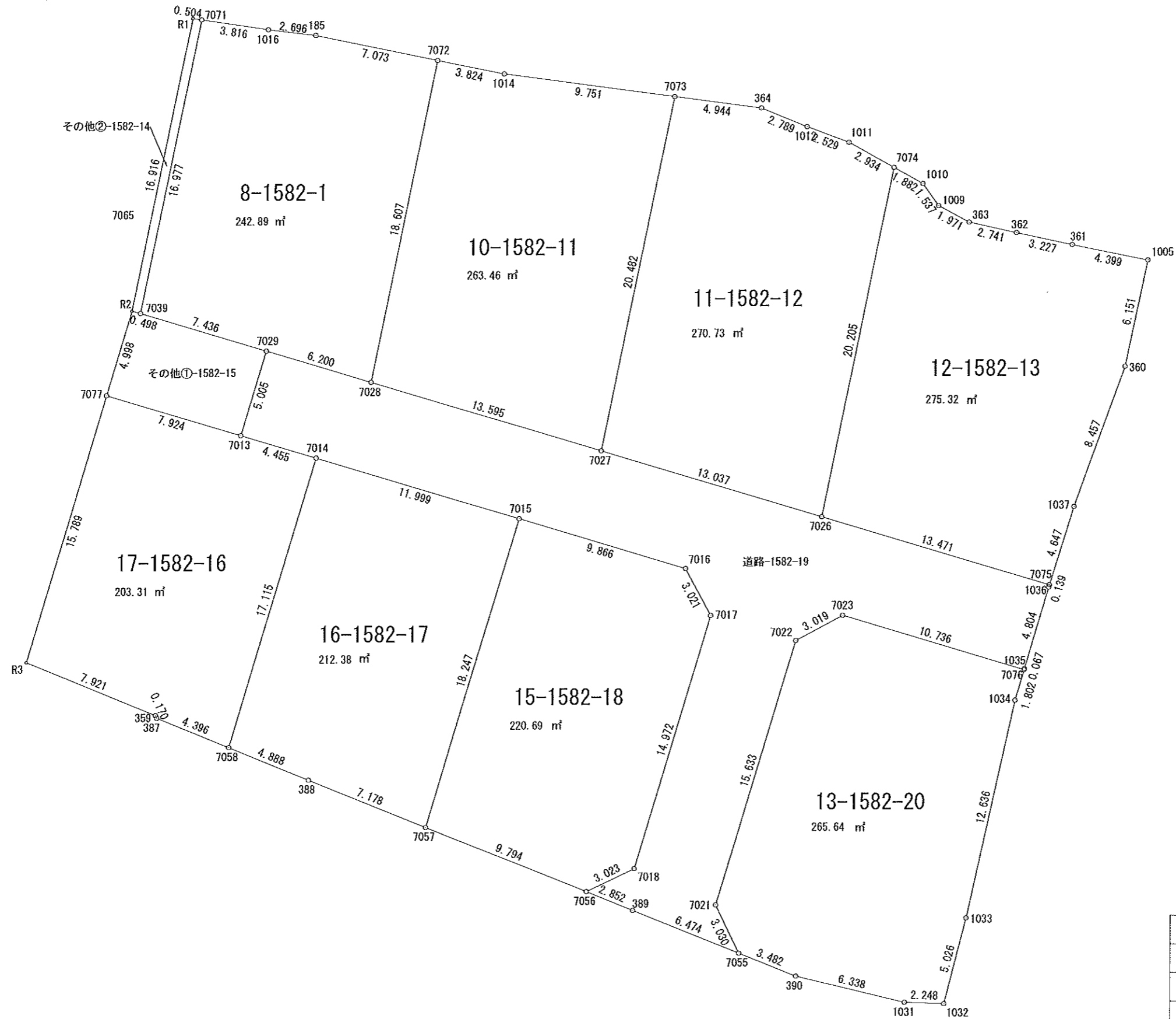
地番 L その他4-1583-15					
NO	Xn	Yn	Yn+1-Yn-1	Xn · (Yn+1-Yn-1)	
8008	140930.471	46573.338	1.572	221542.700412	
8005	140930.231	46574.518	0.773	108939.088563	
385	140928.222	46574.111	-1.572	-221539.164984	
384	140928.572	46572.946	-0.773	-108937.786156	
			合計	4.817835	
			合計面積	2.4089175	
			地積	2.40	

地番 J その他1-1642-10					
NO	Xn	Yn	Yn+1-Yn-1	Xn · (Yn+1-Yn-1)	
365	140961.475	46572.101	7.524	1060594.137900	
369	140960.457	46577.692	3.060	431338.998420	
7057	140948.200	46575.161	-6.739	-949849.919800	
7047	140949.487	46570.953	-4.993	-703760.788591	
7055	140950.785	46570.168	1.148	161811.501180	
			合計	133.929109	
			合計面積	66.9645545	
			地積	66.96	

地番 K その他2-1642-29					
NO	Xn	Yn	Yn+1-Yn-1	Xn · (Yn+1-Yn-1)	
7064	140941.585	46568.505	3.874	546007.700290	
7006	140943.172	46571.082	5.441	766871.798852	
7063	140942.319	46573.946	0.512	72162.467328	
368	140930.930	46571.594	-4.545	-640531.076850	
367	140931.472	46569.401	-4.386	-618125.436192	
366	140934.415	46567.208	-0.896	-126277.235840	
			合計	108.217588	
			合計面積	54.1087940	
			地積	54.10	

地番 L コミ置場-1642-31					
NO	Xn	Yn	Yn+1-Yn-1	Xn · (Yn+1-Yn-1)	
7047	140949.487	46570.953	3.427	483033.891949	
7067	140948.200	46575.161	4.010	565202.282000	
7066	140947.245	46574.963	-3.427	-483026.208615	
7046	140948.210	46571.734	-4.010	-565202.322100	
			合計	7.643234	
			合計面積	3.8216170	
			地積	3.82	

実測図 S=1:250



所在	高松市川部町字中田井
地番	
作製年月日	令和3年7月14日
作製者	高松市円座町1580-10 土地家屋調査士 岡野上 竜二 二級建築士 宅地建物取引士

求積表

地番 A 8-1582-1				
NO	Xn	Yn	Yn+1-Yn-1	Xn · (Yn+1-Yn-1)
7071	140951.281	46820.420	7.183	1012453.051423
1016	140950.710	46624.193	6.449	908991.128790
185	140950.380	46626.869	9.605	1353828.399900
7072	140948.962	46633.798	3.202	451318.576324
7028	140930.732	46630.071	-9.667	-1362377.386244
7029	140932.508	46624.131	-13.061	-1840719.486988
7039	140934.650	46617.010	-3.711	-523008.486150
合計				485.797055
合計面積				242.8985275
地積				242.89 m ²

地番 B 10-1582-11				
NO	Xn	Yn	Yn+1-Yn-1	Xn · (Yn+1-Yn-1)
7072	140948.962	46633.798	7.473	1053311.593026
1014	140948.195	46637.544	13.411	1890256.243145
7073	140946.905	46647.209	5.553	782678.163465
7027	140926.840	46643.097	-17.138	-2415204.183920
7028	140930.732	46630.071	-9.299	-1310514.876868
合計				526.938848
合計面積				263.4694240
地積				263.46 m ²

地番 C 11-1582-12				
NO	Xn	Yn	Yn+1-Yn-1	Xn · (Yn+1-Yn-1)
7073	140946.905	46647.209	9.013	1270354.454765
364	140946.251	46652.110	7.484	1054841.742484
1012	140945.199	46654.693	4.953	698101.570647
1011	140944.315	46657.063	4.935	695560.194525
7074	140942.890	46659.628	-1.479	-208454.534310
7026	140923.094	46655.584	-16.531	-2329599.666914
7027	140926.840	46643.097	-8.375	-1180262.285000
合計				541.476197
合計面積				270.7380985
地積				270.73 m ²

地番 D 12-1582-13				
NO	Xn	Yn	Yn+1-Yn-1	Xn · (Yn+1-Yn-1)
7074	140942.890	46659.628	5.689	801824.101210
1010	140941.976	46661.273	2.537	357569.793112
1009	140940.724	46662.165	2.625	369969.400500
363	140939.785	46663.898	4.408	621262.572280
362	140938.186	46666.573	5.829	821534.515194
361	140938.505	46669.727	7.466	1052246.878330
1005	140937.632	46674.039	3.044	429014.151808
360	140931.613	46672.771	-4.171	-587825.757823
1037	140923.670	46669.868	-4.281	-603294.231270
7075	140919.232	46668.490	-14.284	-2012890.309888
7026	140923.094	46655.584	-8.852	-1248860.459028
合計				550.654425
合計面積				275.3272125
地積				275.32 m ²

地番 E 17-1582-16				
NO	Xn	Yn	Yn+1-Yn-1	Xn · (Yn+1-Yn-1)
7077	140929.996	46615.097	12.118	1707789.691528
7013	140927.716	46622.686	11.858	1671120.856328
7014	140926.443	46626.955	-0.649	-91461.261507
7058	140910.050	46622.037	-8.985	-1266076.799250
387	140911.719	46617.970	-4.137	-582951.781503
359	140911.874	46617.900	-7.402	-1043029.691348
R3	140914.871	46610.568	-2.803	-394984.383413
合計				406.630835
合計面積				203.3154175
地積				203.31 m ²

地番 F 16-1582-17				
NO	Xn	Yn	Yn+1-Yn-1	Xn · (Yn+1-Yn-1)
7014	140926.443	46626.955	16.411	2312743.866073
7015	140922.996	46638.448	6.263	882600.723948
7057	140905.515	46633.218	-11.889	-1675225.667835
388	140908.194	46626.559	-11.181	-1575494.517114
7058	140910.050	46622.037	0.396	55800.379800
合計				424.774872
合計面積				212.3874360
地積				212.38 m ²

地番 G 15-1582-18				
NO	Xn	Yn	Yn+1-Yn-1	Xn · (Yn+1-Yn-1)
7015	140922.996	46638.448	14.682	2069031.427272
7016	140920.167	46647.900	10.880	1533211.416960
7017	140917.505	46649.328	-2.868	-404151.404340
7018	140903.163	46645.032	-7.024	-989703.816912
7056	140901.860	46642.304	-11.814	-1664614.574040
7057	140905.515	46633.218	-3.856	-543331.665840
合計				441.383100
合計面積				220.6915500
地積				220.69 m ²

地番 H 道路-1582-19				
NO	Xn	Yn	Yn+1-Yn-1	Xn · (Yn+1-Yn-1)
7029	140932.508	46624.131	7.385	1040786.571580
7028	140930.732	46630.071	18.966	2672892.263112
7027	140926.840	46643.097	25.513	3595466.468920
7026	140923.094	46655.584	25.393	3578460.125942
7075	140919.232	46668.490	12.865	1812925.919680
1036	140919.099	46668.449	-1.399	-197145.819501
1035	140914.491	46667.091	-1.377	-194039.254107
7076	140914.427	46667.072	-10.302	-1451700.426954
7023	140917.511	46656.789	-12.940	-1823472.592340
7022	140916.078	46654.132	-7.144	-1006704.461232
7021	140901.103	46649.645	-3.180	-448065.507540
7055	140898.369	46650.952	-4.695	-661517.842455
389	140900.795	46644.950	-8.648	-1218510.075160
7056	140901.860	46642.304	0.082	11553.952520
7018	140903.163	46645.032	7.024	989703.816912
7017	140917.505	46649.328	2.868	404151.404340
7016	140920.167	46647.900	-10.880	-1533211.416960
7015	140922.996	46638.448	-20.945	-2951632.151220
7014	140926.443	46626.955	-15.762	-2221282.594566
7013	140927.716	46622.686	-2.824	-397979.869984
合計				678.510987
合計面積				339.2554935
地積				339.25 m ²

地番 I その他②-1582-14				
NO	Xn	Yn	Yn+1-Yn-1	Xn · (Yn+1-Yn-1)
R1	140951.356	46519.922	3.890	548300.774840
7071	140951.281	46620.420	-2.912	-410450.130272
7039	140934.650	46617.010	-3.890	-548235.788500
R2	140934.784	46616.530	2.912	410402.091008
合計				16.947076
合計面積				8.4735380
地積				8.47 m ²

地番 J その他①-1582-15				
NO	Xn	Yn	Yn+1-Yn-1	Xn · (Yn+1-Yn-1)
R2	140934.784	46616.530	1.913	269608.241792
7039	140934.650	46617.010	7.601	1071244.274650
7029	140932.508	46624.131	5.676	799932.915408
7013	140927.716	46622.686	-9.034	-1273140.986344
7077	140929.996	46615.097	-6.156	-867565.055376
合計				79.390130
合計面積				39.6850650
地積				39.69 m ²

地番 K 13-1582-20				
NO	Xn	Yn	Yn+1-Yn-1	Xn · (Yn+1-Yn-1)
7022	140916.078	46654.132	7.144	1006704.461232
7023	140917.511	46656.789	12.940	1823472.592340
7076	140914.427	46667.072	9.774	1377297.609498
1034	140912.698	46666.563	-3.239	-456416.228822
1033	140900.360	46663.833	-3.976	-560219.831360
1032	140895.491	46662.587	-3.492	-492007.054572
1031	140895.578	46660.341	-8.407	-1184509.124246
390	140897.064	46654.180	-9.389	-1322882.533896
7055	140898.369	46650.952	-4.535	-638974.103415
7021	140901.103	46649.645	3.180	448065.507540
合計				531.294299
合計面積				265.6471495
地積				265.64 m ²